

GLOSSY
MANAGEMENT
PLANS NEVER KILLED
A DOG

**The importance of community and
personal engagement**

COLLABORATIVE PEST MANAGEMENT

- Facilitator?
- One who contributes structure and process to interactions so groups are able to function effectively and make high quality decisions.

A helper and enabler whose goal is to support others as they pursue their objectives



Manage the process and leave the content to the participants



Wongwibinda 2015

- Conflict on many fronts
- Massive predation issues
- Very aggravated landholders
- Mental health
- Many sides to the story
- Stalled Management Plan

The First Meeting

- Wongwibinda Hall
- No National Parks
- The Management Plan
- Version 7 Stalled
- Tears and anguish
- Commitment
- Chandler River and Jeogla

Closing the Gap

- Dorrigo National Parks
- Footprints in the paddock
- Individual issues and public forums
- Ebor and Hernani
- Red Range/Pinkett

The Second Meeting

- Guyra Council Chambers
- Independent Expert
- Meeting had to be called off
- Loss of faith in Parks
- Tears and Anguish
- On tour

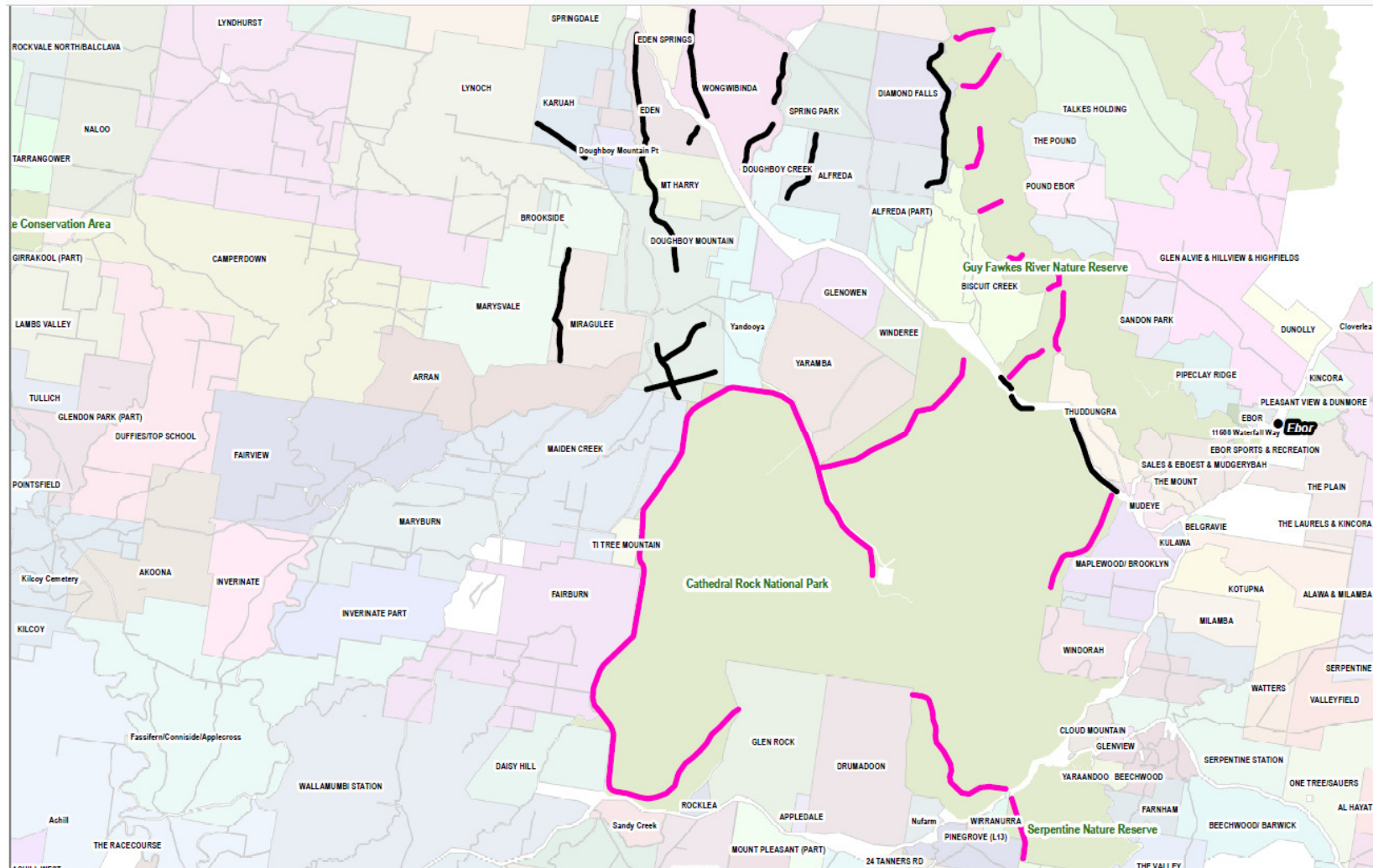
Signing the Plan

- Back to Guyra
- Independent Observers
- Agreement
- More Tears
- Wongwibinda AGM
- Jeogla and Chandler River

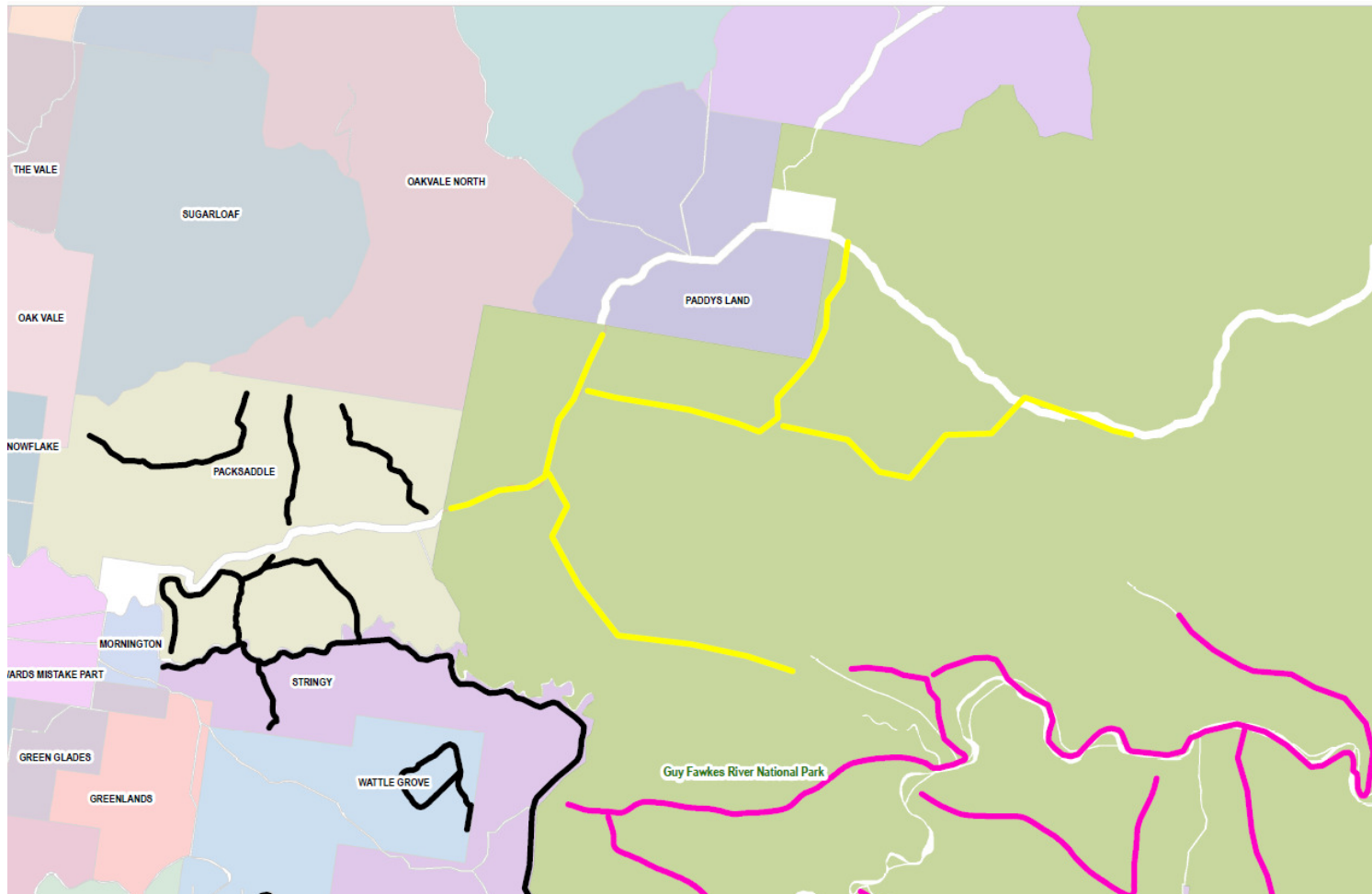
Management Plans

- Individual group plans
- Certainty of proactive control for 5 years
- Agency ability to budget
- Reactive control strategy
- Nil Tenure
- Signed by all parties

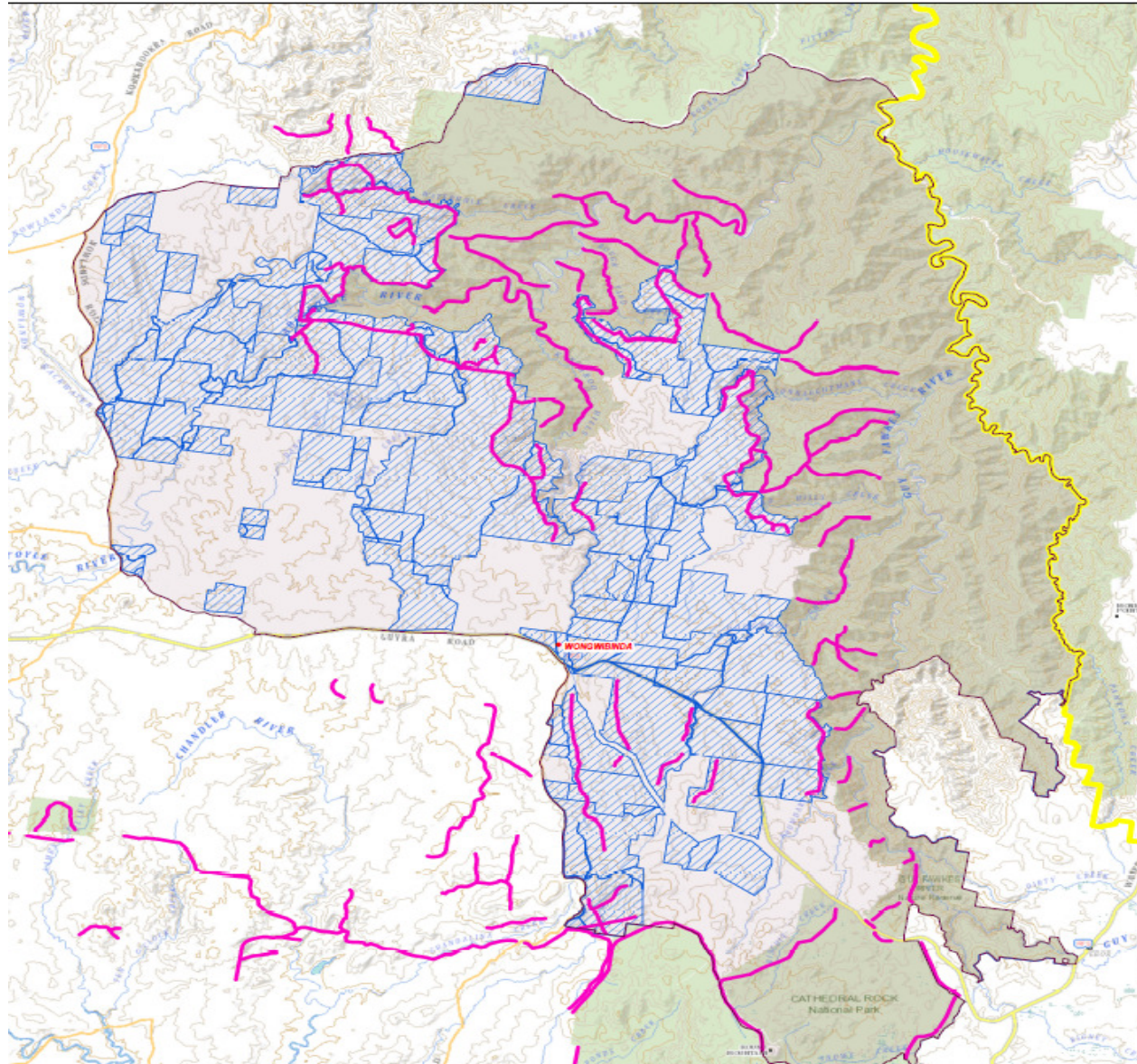
Cathedral Rock National Park

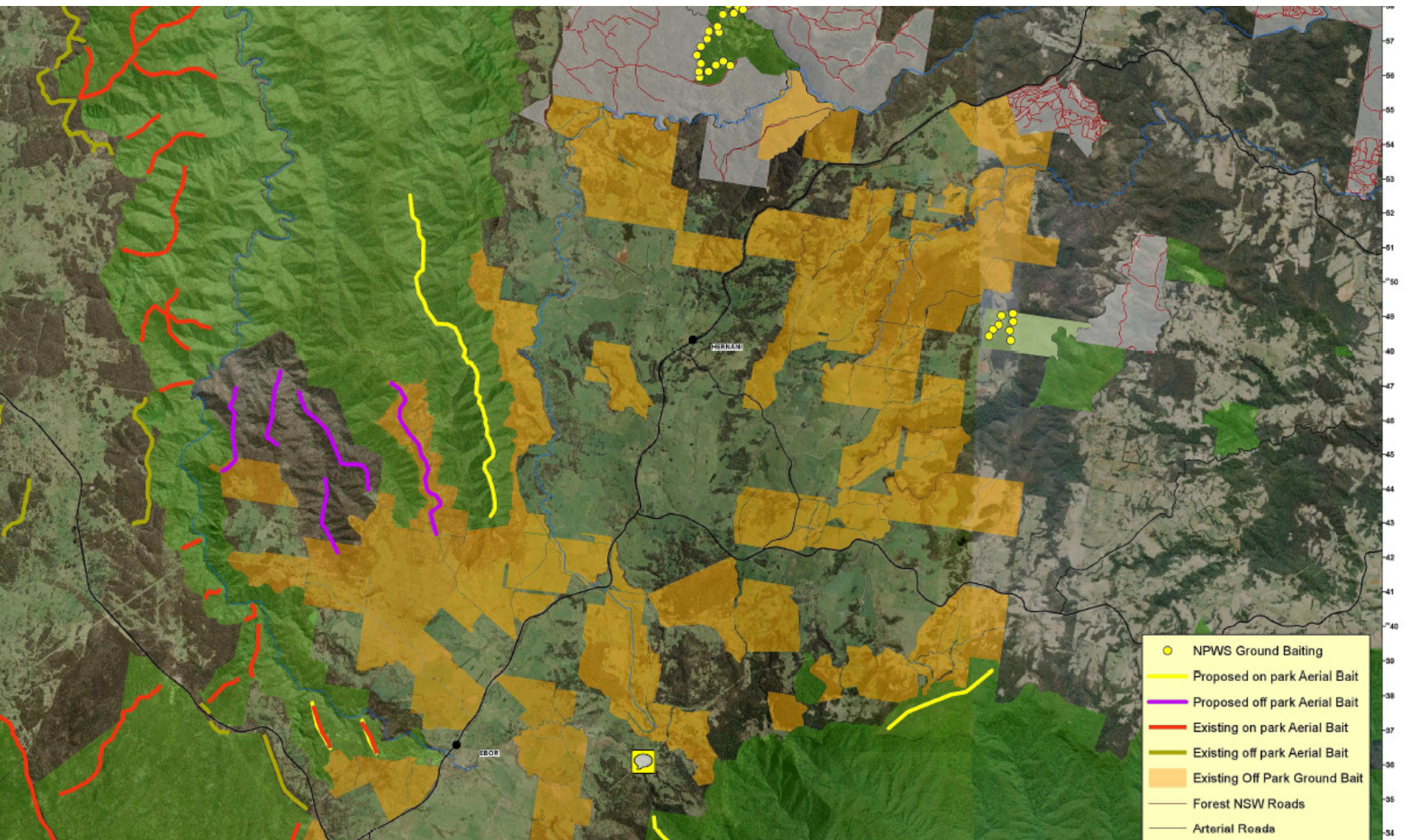


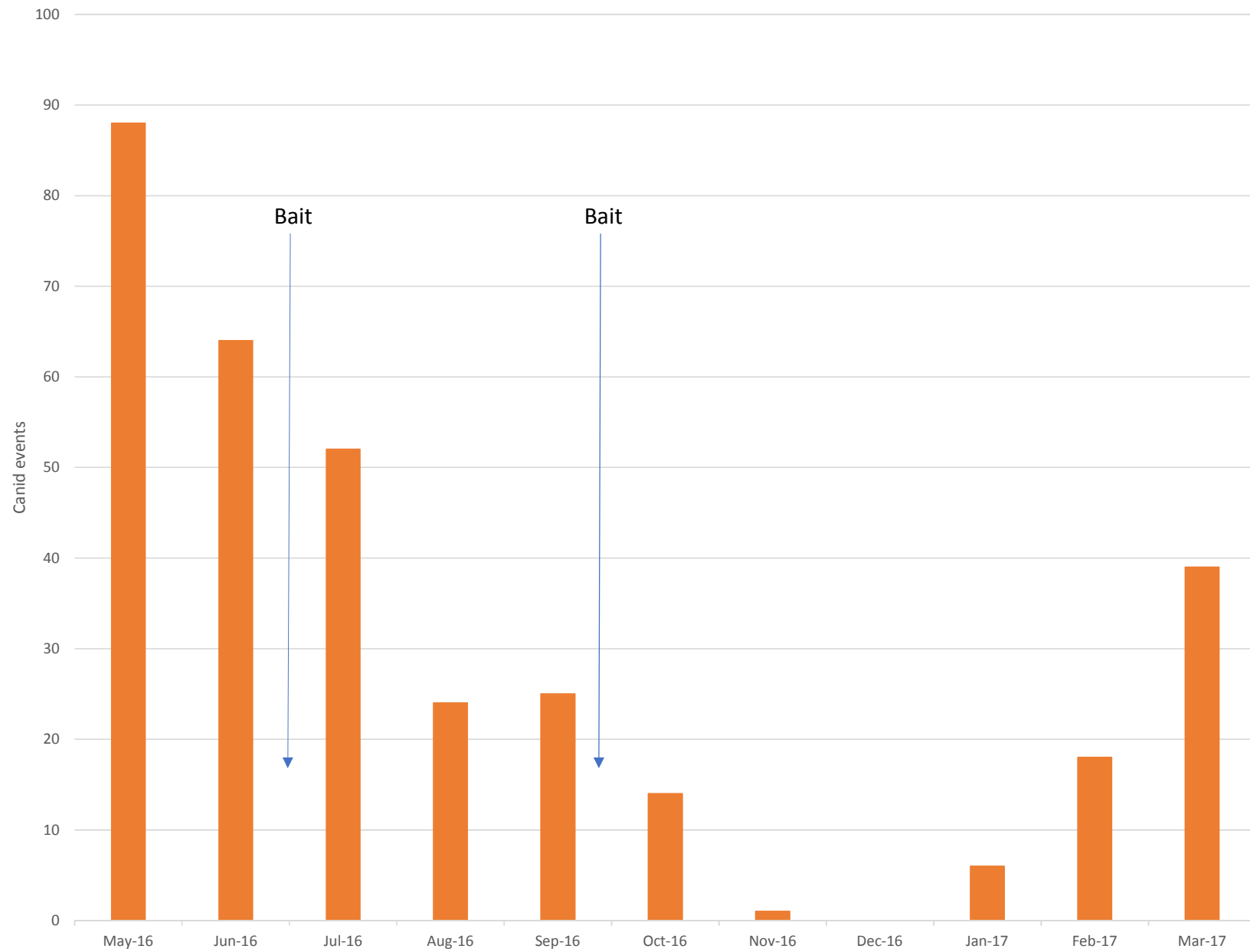
2017 Additional Lines Guy Faulks National Park



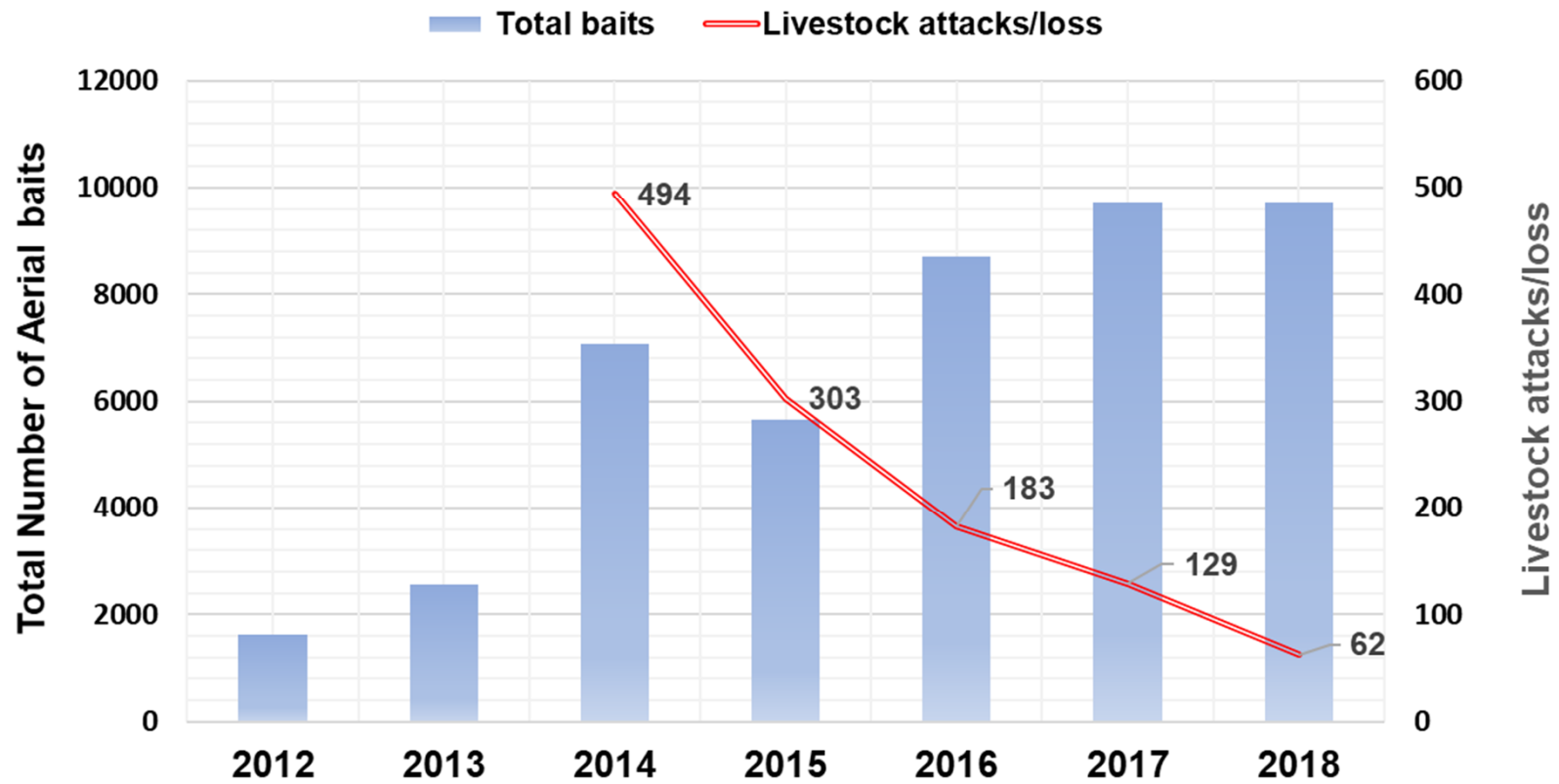
Wongwibinda 2016 holdings issued wild dog baits







Wongwibinda Aerial Baiting vs Stock attacks/loss

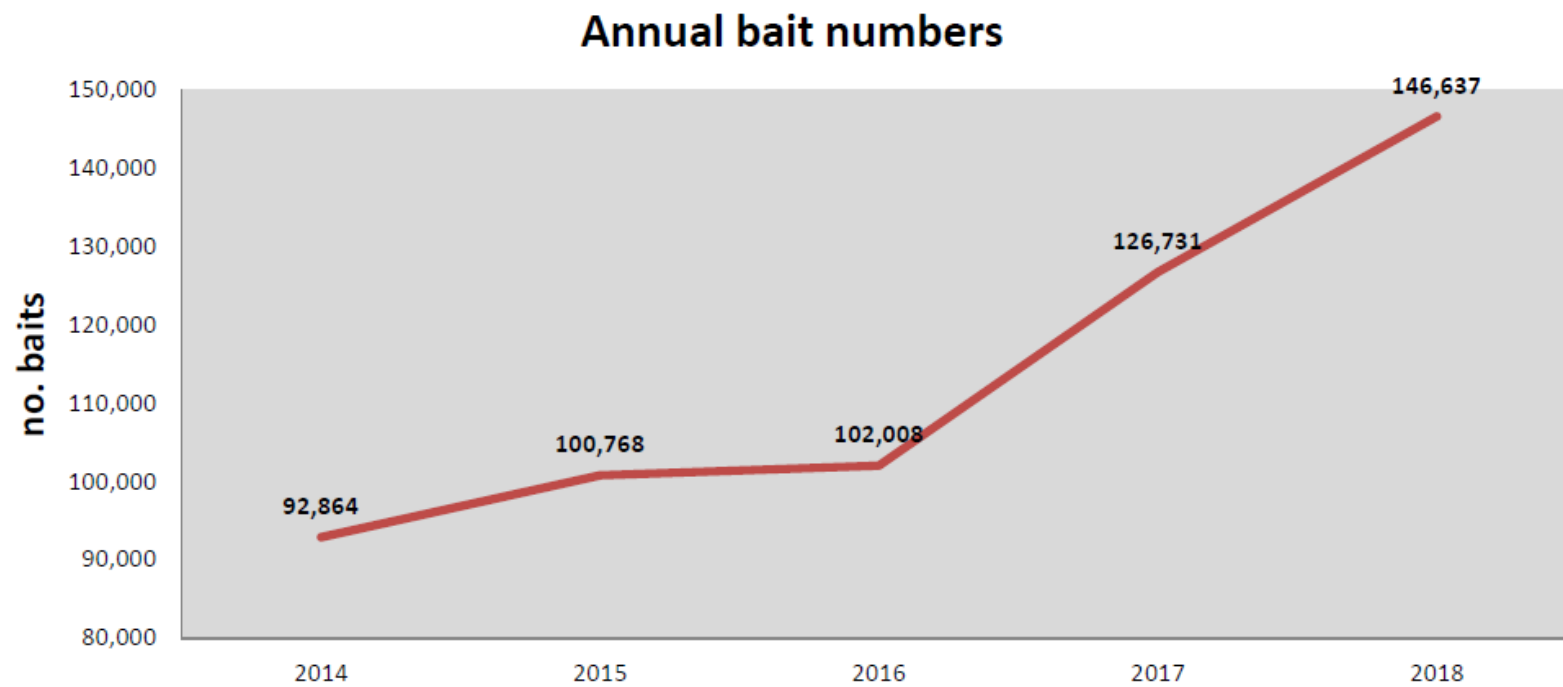


2016 to 2018 Results Aerial Baiting

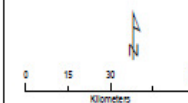
- 2016 23 associations
- 102008 baits, 2550.19km
- 2018 29 associations
- 146637 baits, 3665.93km

Program Risks (future)

1. Expansion



2017 Wild Dog Aerial Baiting



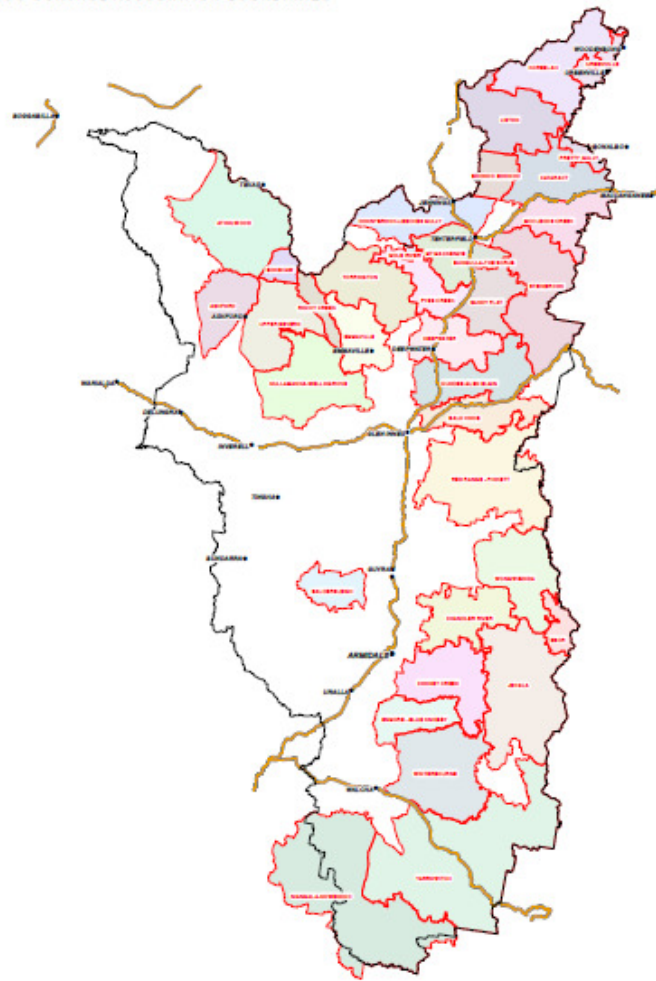
Northern Tablelands Local Land Services
Invasive Species Unit

Disclaimer
The State of New South Wales, and the Northern Tablelands Local Land Services and its employees, officers, agents or servants are not responsible for the result of any actions taken on the basis of the information contained on this map or for any errors, omissions or inaccuracies contained in this map.

The State of New South Wales and its employees, officers, agents or servants expressly disclaim all and any liability and responsibility to any person in respect of anything and of the consequences, of anything done or omitted to be done by any such person in reliance, whether wholly or partly upon the information contained in the map.

Date: 10/04/2017

NORTHERN TABLELANDS LOCAL LAND SERVICES
WILD DOG CONTROL ASSOCIATION BOUNDARIES



NTLLS Invasive Species Unit

Disclaimer:
The State of New South Wales and the Northern Tablelands Local Land Services and its employees, officers, agents or servants are not responsible for the result of any action taken on the basis of the information contained on this map or for any errors, omissions or inaccuracies contained in this map.
The State of New South Wales and its employees, officers, agents or servants expressly disclaim all and any liability and responsibility in any person in respect of anything and of the consequences, of anything done or omitted to be done by any such person in reliance, whether wholly or partly upon the information contained on this map.
Map Date: 2017. © Crown Copyright, 1986 Department of Planning and Infrastructure.
Author: Mark Tennant Date: 9/11/2017

Completed Management Plans

- Atholwood, Ashford, Nullamanna, Emmaville, Pyes Ck, Hernani, Niangala/Nowandoc, Winterbourne/Moonah, Donneybrook, Deepwater, Sandy Flat, Steinbrook, McClouds Creek, Cataract River, Barnard River, Enmore/Blue Nobby, Chandler River, Wongwibinda, Jeogla, Cooney Creek, Tenterdon, Baldersleigh, Yarrowitch, Dundee, Bald Knob, Redrange/Pinkett, Liston, Pretty Gully,
- Walgett
- TBC Management Plans Mt Mackenzie, Kooreelah, Mole River
- TBC New associations Copeton Dam, Puddledock, Rocky Creek

Basic Principles of Onground Management Plans.

- Concise and proactive
- Actions Kill dogs/Reduces predation
- Resolve disputes
- Calendar/Maps
- Key contacts
- Signed

Lessons learnt

- Be genuine
- Commit don't overcommit
- Follow up
- Regional Pest Plans vs Local Plans
- Are farmers a group
- Top down or bottom up

The Human dimension

- If people were rational I wouldn't have a job
- Managing the dog problem has very little to do with dogs
- What does effective management look like?
- Have a plan not a concept
- Communication
- No silver bullets

Take Home Messages

- Have a plan not a concept
- Communicate openly
- Be inclusive
- Put footprints in the paddock
- You can't save dead sheep
- Presented on behalf of team wild dog Northern Tablelands